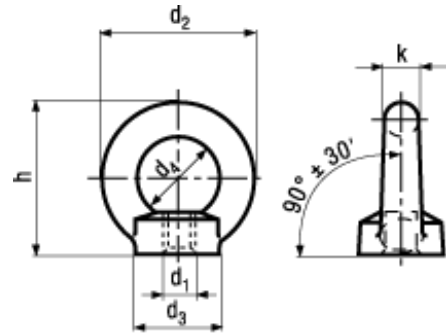




DIN 582



BN 33043

Lifting eye nuts

Stainless steel A4

- ~CSN 021669



Products are subject to the relevant security requirements in use as load suspension devices. The mounting instructions and loads must be observed.



Supply possibilities for fine threads and other types of threads on request



⚙️ To ensure safety, do not exceed the load capacities specified in the table when using a single eye nut or two eye nuts at horizontal angle greater than 45 degrees.

The working load limits specified in the chart require that:

- the lifting eye nut is completely screwed on
- the lifting eye nut must be tightened completely to the bearing surface
- the length of the counterpart thread is sufficient
- the strength of the mating screw thread is sufficient

Recommendations: Before placing the lifting eye nut into use, ensure correct seating and check for damage (eng. corrosion, cracking, beat traces, deformation).

Eye nuts with obvious damage should not be used.

		M8	M10	M12	M16	M20	M24	M30
A	 1 x 90° kg max.	140	230	340	700	1200	1800	3200
B	 2 x ≤ 45° kg max.	100	170	240	500	860	1290	2300
C	 2 x ≤ 45° kg max.	70	115	170	350	600	900	1600

⚙️ Working loads limits in kg max.

A: axial per eye nut

B: per eye nut ≤ 45°

C: laterally per eye nut ≤ 45°

Lifting eye bolts must always be tightened to the contact surface. Transverse loads are not allowed.

Washer is required under screw head.

When used as temporary attachments on larger objects, the next larger thread size should be used.

Article#	d1	h	d2	d3	d4	k
5818710	M8	36	36	20	20	8
5818720	M10	45	45	25	25	10
5818730	M12	53	54	30	30	12
5818740	M16	62	63	35	35	14
5818750	M20	71	72	40	40	16
5818760	M24	90	90	50	50	20
5818770	M30	109	108	65	60	24