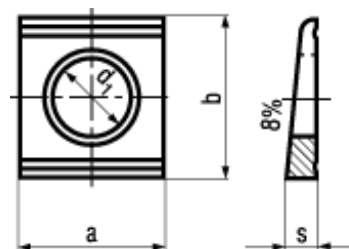


DIN 434




BN 755

Square taper washers

Steel

hot dip galvanized

- ~UNI 6598
- ~CSN 021739

Article#		d ₁	a	b	s
1274589	M8	9	22	22	3,8
1274597	M10	11	22	22	3,8
1274600	M12	13,5	26	30	4,9
1274619	M16	17,5	32	36	5,9
1274627	M20	22	40	44	7
1274643	M24	26	56	56	8,5