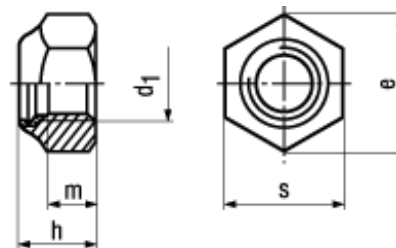




DIN 985

Standard withdrawn



BN 1722

Prevailing torque type hex lock nuts

thin type, with polyamide insert

Stainless steel A4

- ~UNI 7474

M10; M12; M14; M22: wrench size according to ISO on request

Article#	d ₁	e min.	h max.	m	s
1397176	M3	6,01	4	2,4	5,5
1397184	M4	7,66	5	2,9	7
1397222	M5	8,79	5	3,2	8
1397230	M6	11,05	6	4	10
1397249	M8	14,38	8	5,5	13
1397257	M10	18,9	10	6,5	17
1397273	M12	21,1	12	8	19
1397311	M14	24,49	14	9,5	22
1397338	M16	26,75	16	10,5	24
5805620	M18	29,56	18,5	13	27
1397346	M20	32,95	20	14	30
5805630	M22	35,03	22	15	32
5402520	M24	39,55	24	15	36
5805640	M27	45,2	27	17	41
5402521	M30	50,85	30	19	46